



## QUICK SERVICE STOPS

Besides operational security, low maintenance costs are almost as important for the user of the machine. With that in mind, the engineers at Eliet developed several smart solutions:

### 1. QUICKLY DETACHABLE FRONT COVER

Of all the material passing through the turbine, some of it is likely to stick to its sides. On most machines, in order to remove the front cover, you first have to find the mounting nuts in the dirt sticking to it. The special and well thought-out mounting bolts on the Eliet Truck Loader allow you to remove the front cover in no time with minimum tools.

### 2. CLEANING VALVE

If the vacuum loader regularly sucks up sludge and mud, a deposit will soon form on the bottom of the turbine. Eliet therefore provided a cleaning valve on the bottom of the machine, which enables you to quickly spray the sludge out of the turbine by using a water hose.

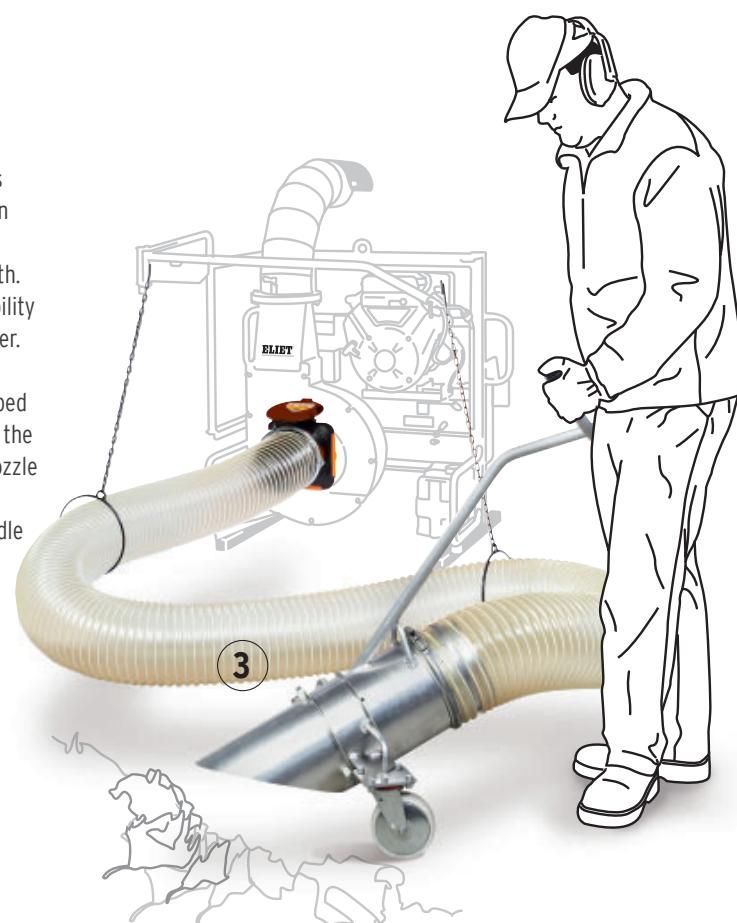


### 3. TRANSPARENT VACUUM HOSE

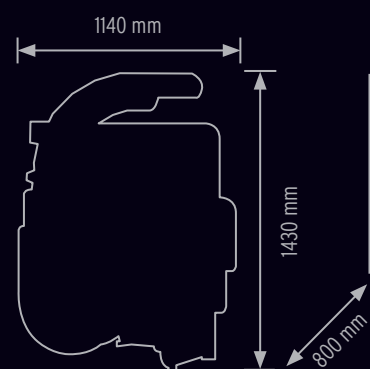
The Truck Loader is also equipped with a transparent vacuum-flex vacuum hose. This light and transparent vacuum hose hardly obstructs the user's freedom of movement and allows him to immediately pin-point and then remove any blockage from the hose. A special quick coupling system easily detaches the vacuum hose from the machine. It simultaneously activates the safety device, shutting off the engine if necessary

## ERGONOMICS

The Truck Loader's vacuum hose is attached to a swing handle, with an outreach of 1900mm, keeping the vacuum hose lifted at half its length. This hinged arm offers great flexibility to follow the movements of the user. For even more user comfort, Eliet developed a vacuum nozzle equipped with two small castor wheels. Now the user is not required to keep the nozzle uplifted, ensuring full freedom of movement. A long handle enables any user, regardless of his posture, to hold the nozzle in an ergonomically correct manner.



## SPECIFICATIONS



### PERFORMANCE

Drive:	B&S Vanguard/Honda GX390
Capacity (hp/kW):	13/16
Air capacity:	108m³/min
Air speed:	260 km/h
Sound capacity:	105 dB(A)
Blow pipe:	360° rotating - Ø 200mm
Vacuum nozzle:	ergonomic swing handle™
Vacuum hose:	Ø 200 mm/vacuum flex
Belt drive:	yes

### DESIGN

Dimensions (LxWxH/mm):	1140 x 800 x 1430 mm
Weight:	160 kg

### OPTIONS

Electric starter	
Carrier frame on castor wheels	
Carrier frame with lifting system	

**ELIET**



For more information about our professional product range, please visit [www.eliet.eu](http://www.eliet.eu) or contact your nearest dealer.



Leaf blower



Shredder



Scarifier



Overseeder

**ELIET**®

**ELIET Europe sa**  
Diesveldstraat 2  
B-8553 Otegem, België  
Tel. +32 (0)56 77 70 88  
Fax +32 (0)56 77 52 13

info@eliet.eu  
[www.eliet.eu](http://www.eliet.eu)

**ELIET USA inc**  
3361 Stafford Street (office B)  
Pittsburgh Pa 15204 - USA  
Phone 412 367 5185  
Fax 412 774 1970

usinfo@elietusa.com  
[www.elietusa.com](http://www.elietusa.com)

**IMPORT UK**  
PINNACLE POWER EQUIPMENT  
The Barns Waterspash Farm  
TW16 6AU Middlesex - ENGLAND  
Phone +44 1932788799  
Fax +44 1932784487  
sales@pinnaclepower.co.uk  
[www.pinnaclepower.co.uk](http://www.pinnaclepower.co.uk)

**IMPORT IN NORWAY**  
SØVDE a/s  
Postboks 83, Industrierveien 51  
NO-1581 Rygge  
Phone +47 69 26 47 50  
Fax +47 69 26 01 47  
info@sovde.no  
[www.sovde.no](http://www.sovde.no)

**IMPORT IN SWEDEN**  
GRÄSVARDSMASKINER  
I MALMO AB  
BOX 7034, S212 28 MALMÖ  
Phone +46 40 925 286  
Fax +46 40 927 294  
jon.gvm@telia.com  
[www.grasvarvsmaskiner.se](http://www.grasvarvsmaskiner.se)

**IMPORT IN DENMARK**  
FLEX TRADING a/s  
Hvidem Øllevej 9-11  
DK-8900 RANDERS  
Phone +45 89141489  
Fax +45 89141490  
salg@fl extrading.dk  
[www.fl extrading.dk](http://www.fl extrading.dk)

**ELIET**®  
In harmony with nature

©2010 Eliet nv - All rights reserved - printed in Belgium



**STRONG IN CLEARING  
GARDEN AND PARK WASTE**

Truckloader





# TRUCK LOADER FAST & EFFICIENT

The Eliet Truck Loader was designed to meet the needs of intensive users down to the smallest detail. Equipped with a powerful engine, this air cyclone develops a suction power that effortlessly removes large volumes of leaves. With the ELIET Truck Loader you can count on a reliable, sturdy and ergonomic machine with a guaranteed low maintenance cost.

## SAFETY IS KEY

Key in the development of the new generation of Truck Loaders was the active safety of the machine through integration of the coupling and the brake. This means that upon decoupling of the belt drive, the turbine automatically slows down.



## STURDY AND COMPACT

It is a well-known fact that vacuum loaders must be able to stand rough handling. Leaves, pebbles, sand, sludge, beverage cans ... the machine must be able to process it all effortlessly. In that respect, the Eliet Truck Loader is a benchmark on the market.

Because the Truck Loader is usually attached to the loading platform of a lorry, its short construction is a great feature. And since the width of the machine measures only 66cm, it doesn't elongate the vehicle.



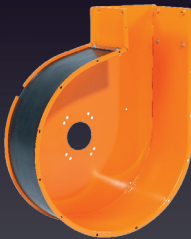
### SUSPENSION DEVICES

The Truck Loader is equipped with an eye by which the machine can be lifted. This lifting eye is positioned in such a way that the Truck Loader hangs in a balanced position when lifted. It therefore requires little effort to couple the 160kg weighing machine to a trailer or a loading platform.

Also, the **hooks** provided enable easy attachment to a pick-up or a trailer. The supports are adaptable to the form and construction of your vehicle.

## NOISE REDUCING TURBINE WALL

Every leaf or pebble that is vacuumed up follows the air stream through the vacuum hose and hits the turbine. The centrifugal power causes everything to be swirled against the turbine wall, where it will subsequently follow the spiral casing into the blow pipe. The turbine wall therefore acts as a kind of a drum, generating a lot of noise. Thanks to an adapted rubber mantle, Eliet was able to reduce the noise on each impact..



## OPERATIONAL SECURITY

Many factors are usually considered when purchasing a machine. Aside from reliability of the materials used, the future user wants to have certainty about the safety of the machine and its user comfort. On top of these criteria the user will first and foremost be looking for a machine he can count on. In order to meet those requirements, Eliet offers a good many guarantees with respect to the Truck Loader.



### STEEL TURBINE WITH CONIC BEARINGS

The steel turbine (6mm) is made from high-quality steel and is resistant to the impact of vacuumed stones and the grinding effect from sand and earth. Although the steel impeller is in itself a guarantee for sturdiness, this also means that there's quite some weight on the ventilator axle. Intensive use may cause axle bearing play, which, if the bearing is not adjusted, can have far-reaching consequences for the machine. The conic bearing allows for quick and simple adjustment, and hence adds to more operational security and a longer life for the machine.

### 1. BELT DRIVE

Because operational security is of crucial importance, Eliet chose to equip the machine with a belt drive. Thus, the rotation inertia of the heavy turbine doesn't influence the crankshaft of the engine. In addition it allows for a quicker start of the engine.

### 2. ELECTRO-PNEUMATIC OPERATION

Furthermore, Eliet provided for an electro-pneumatic decoupling device. This highly contributes to the safety level of the machine, since not the engine, but the coupling is turned off in a potentially risky situation. This reduces the number of starting procedures considerably, which in turn increases the life of the starter.



## 360° ROTATING BLOW PIPE

Just like the vacuum hose, the blow pipe with adjustable valve has a diameter of 200 mm, making blockages almost impossible. In addition, the swirled pipe, made from welded steel elements, can rotate 360°. The rotation point is made of nylon; it is self-lubricant and as a result will never get blocked by dirt or rust.

## ADJUSTABLE VALVE

In order to be able to fill the loading area of a truck to the brim, a deflector valve is mounted at the end of the blow pipe. It can be adjusted at any desired angle. The form of the valve prevents the air stream from immediately diverging as it leaves the pipe, which allows for a better aim.